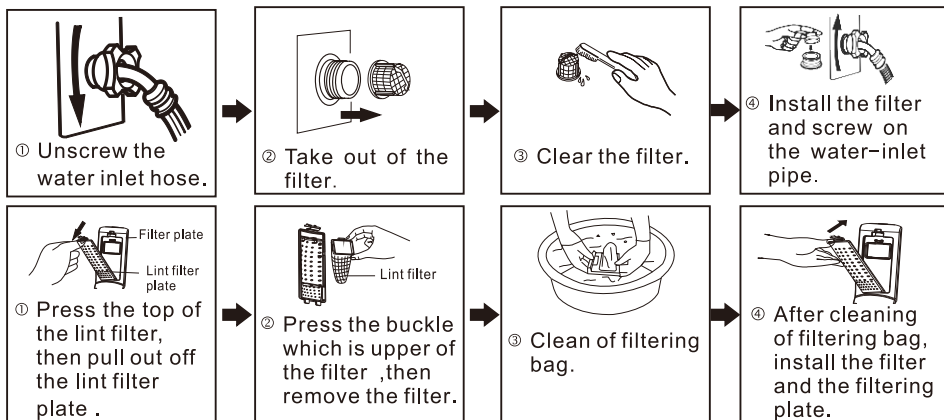




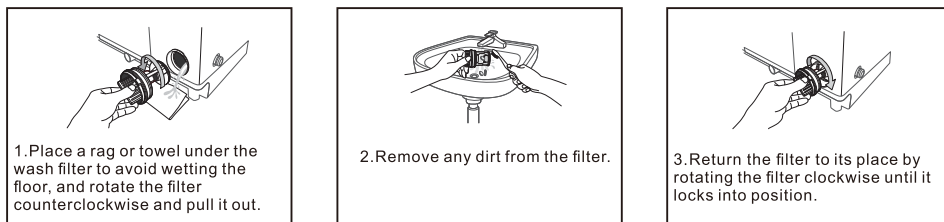
Cleaning of The lint bag and filter

The special circulation water flow is designed for this washer, thus the flock powder and flock residues will be automatically collected into the filtering bag. After application, the user shall regularly clean the filtering bag to remove the flock powder and flock residues. Detail operation methods are following.



Cleaning the pump filter

Only for the upper drain system, detail operation methods are following. Clean up every two months.



Trouble shooting tips

Common occurrences

Situation	Cause
• The spinning is intermittent when it starts.	• Redistribute the load evenly. Close the top lid.
• The wash procedure pauses.	• The cloth sensor is detecting, it will add water after about 55 seconds.
• Select spin program, but it does not work.	• The program is setting the drain time, a period of time is needed before the spin program starts.
• There maybe have some water in the drain hose when the first use.	• It is the water remaining after the performance inspection by the factory.

※ If the machine does not work normally, or alarms, please check as the following list. If the problem persists, please contact local service office or the sales service department of our company. The customer should not dismantle the machine without professional skills.



Phenomenon	Inspection Items	Phenomenon	Inspection Items
Washer will not turn on.	Reset circuit breaker or replace fuse. Do not increase fuse capacity. If the problem is a circuit overload, have it corrected by a qualified electrician.	Suddenly stop working.	Is the power or water supply cut off suddenly? If you press the "start/pause" button?
At the first time you use, the machine may have a small amount of water.	Normally, the water was the factory inspection remained.	No spin	When washing machine settings drainage time, it is starting spin after go through a period of time .
No washing	If the power is off or the fuse is burned out. If the power supply voltage is too low. If the water reaches to the required water level.(The machine will not work before reaching the required water level)	Noise	The machine is tilted or shaking? If the coins, zippers and other objects dropped in? Is the noise normal when the motor working ?
Can not operate the buttons.	Did you use the "Child Lock" function ? If you want to choose other function after power on, please press "start/pause" button firstly.	No drain or drain too slowly	Whether the drain is bent, blocking, freezing? Is the highest point of drain above ground 10cm?
No water flows in, or flows slowly.	If the tap turn on, or the water supply cut off? If the screen of the inlet valve is blocked by dirt. whether the tap or the Water-filling pipe has been frozen . If you have choose the "Delay" function? If the "start/pause" button has not pressed?	Control pane become hot.	Electronic Components thermal effect is a normal phenomenon.
Load is too wet at the end of the cycle.	The spin effect will change due to different types of clothing .	Washing effects are not good.	Select a proper procedure . Add the proper detergent quantity according to the instructions in detergent package.
		Wash cycle time is longer than usual.	This is normal. The washer adjusts cycle time automatically to provide optimal results for the selected cycle. The time remaining shown in the display is only an estimate. Actual time may vary.



Trouble Phenomenon

受控文件

Solutions

E 1



No water flows in.



If the tap turn on, or the water supply cut off ?
If it still has such problem , please contact local service office.

E 2



The machine does not drain.



Is the water drain hose placed too high? Is the end of water drain hose blocked?

E 3



The lid is not closed.



Close the lid.

E 4



The water level sensor has failed.



please contact local service office.

E 8



The machine is not balance.



If clothing piled up at one side of the barrel or If the machine is placed unsteadily.

CL



The child-lock alarm.



Remove the child-lock function.