

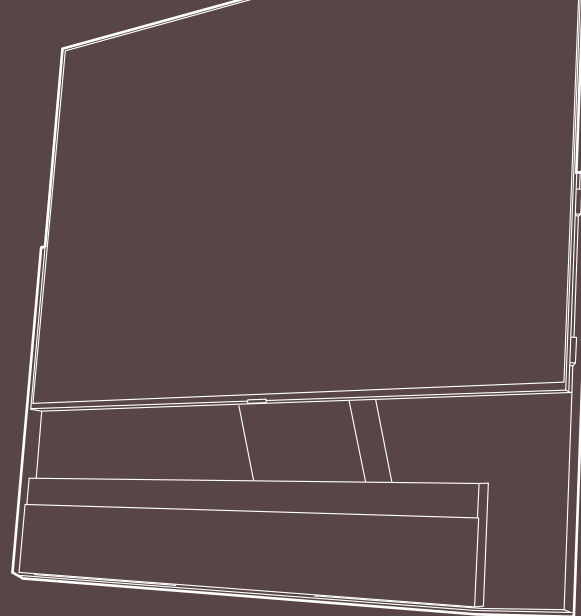
TCL X9

MADE TO MARVEL

FLOOR STAND

STDX925PRO

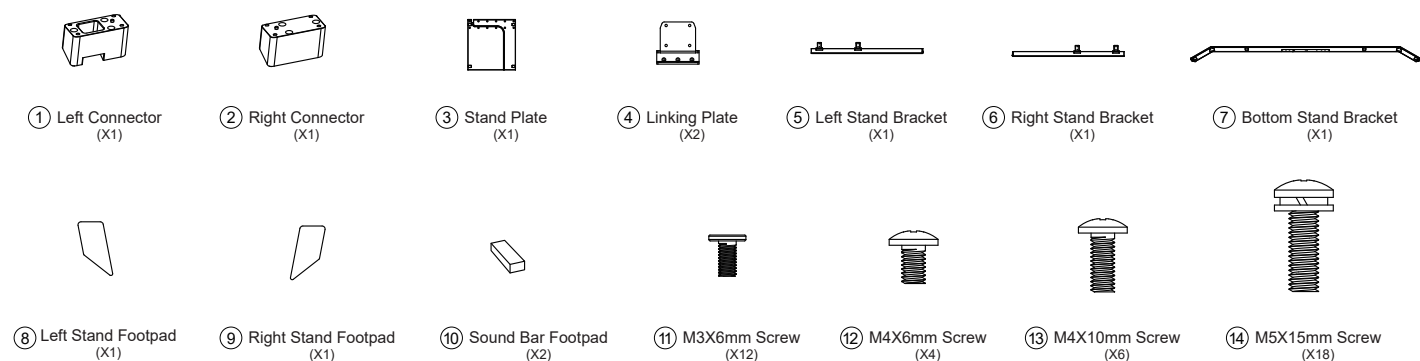
Installation Guide



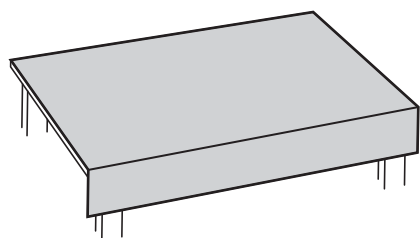
- Notes:**
- If the floor stand has been assembled, disregard instructions below.
 - Follow the instructions accordingly based on the floor stand supplied to you.
 - Graphics contained within this publication are for representation only.
 - Keep the screws and plastic parts away from grease and organic solvents to avoid damage, especially during the assembly process.
 - During installation, lay some soft materials below the screen to avoid scratch and damage to the screen.
 - When the TV is faced down, keep sharp edges away from the screen.



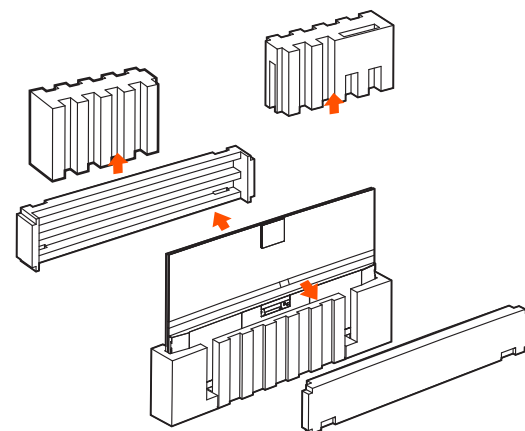
What's in the box



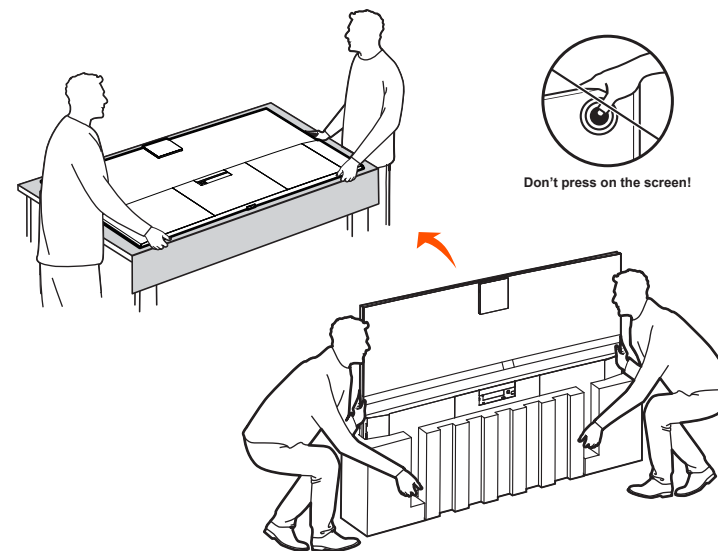
1 Prepare a clean, padded surface like a table covered by a soft cloth. The size should be at least 6.5 ft x 4 ft (2 m x 1.2 m). This will prevent scratches and damages to the TV screen.



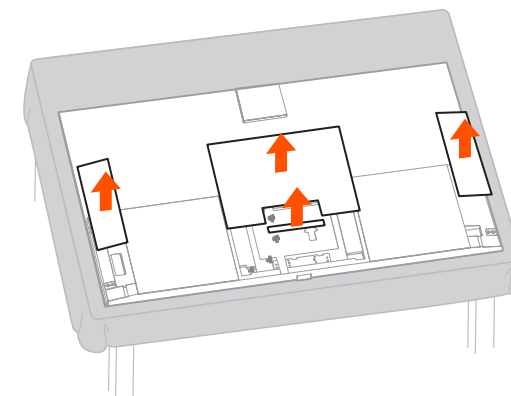
2 Open the package, and remove the protection polyfoams as illustrated.



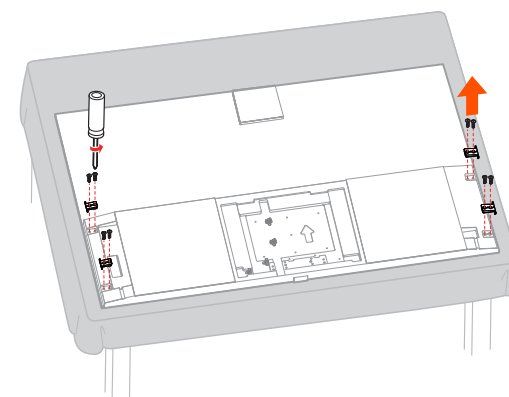
3 Keep the honeycomb panel attached while taking out the TV from the box.



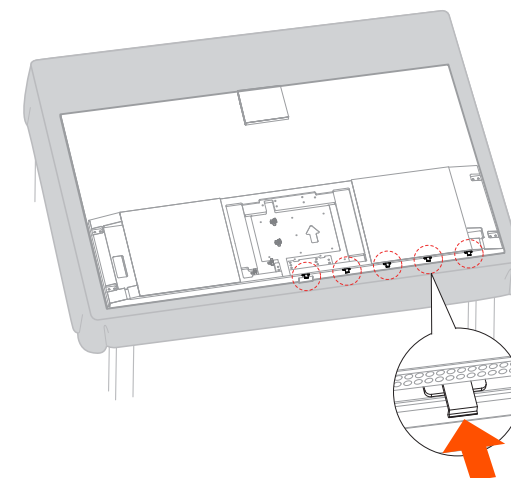
4 Remove the four magnetic glass covers as illustrated.



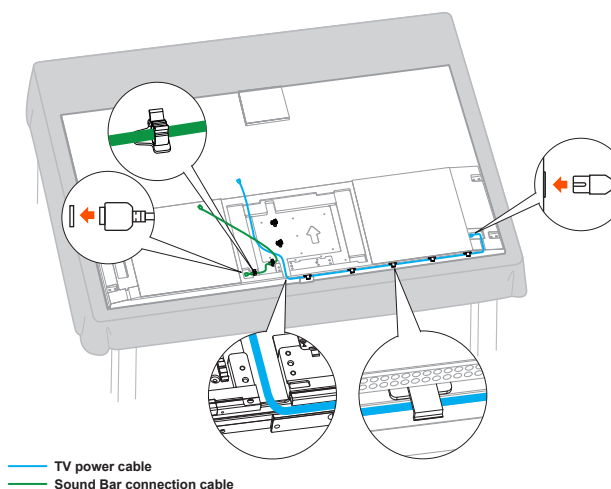
5 Screw off the 8 M5X15mm screws, then remove the four decorative covers to uncover the stand holes.



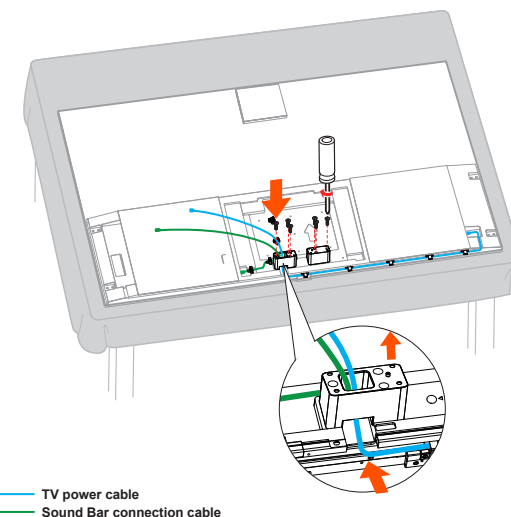
6 Take five buckles out of the TV's accessory bag and put them into the groove of the TV bottom as illustrated.



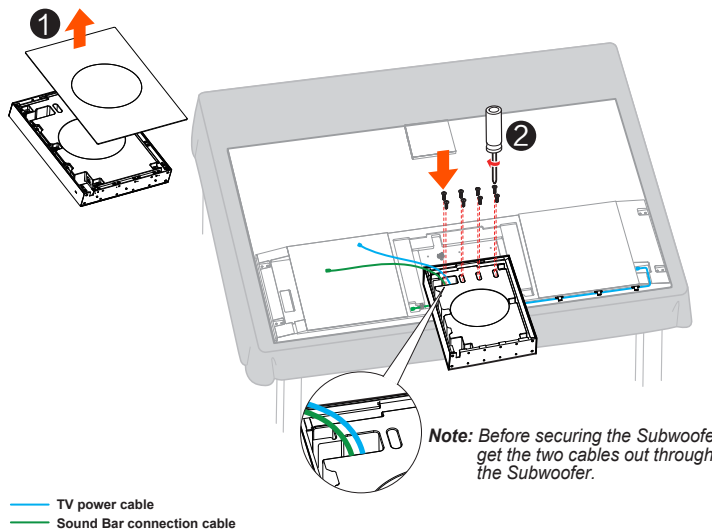
7 Connect the Sound Bar connection cable and TV power cable to the TV and arrange them well as illustrated.



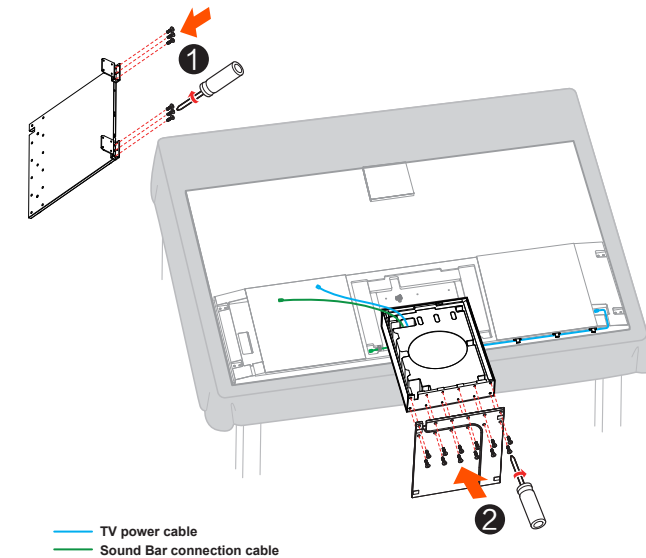
8 Put the two connectors at the bottom and get the Sound Bar connection cable and the TV power cable out through the left connector as illustrated. Then fix the two connectors with 6 M5X15mm screws.



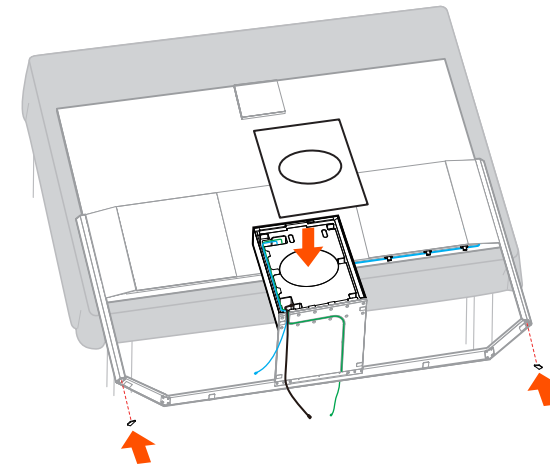
9 Remove the magnetic glass cover of the Subwoofer, align the Subwoofer with the screw holes in the connectors and secure the Subwoofer to the connectors with 8 M5X15mm screws as illustrated.



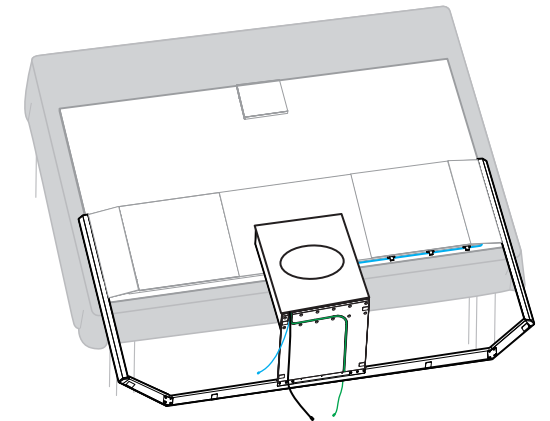
10 Fix the linking plates on the two ends of the one side of the stand plate with 6 M3X6mm screws as illustrated in Figure 1. Then secure the stand plate to the Subwoofer with 12 M5X15mm screws as illustrated in Figure 2.



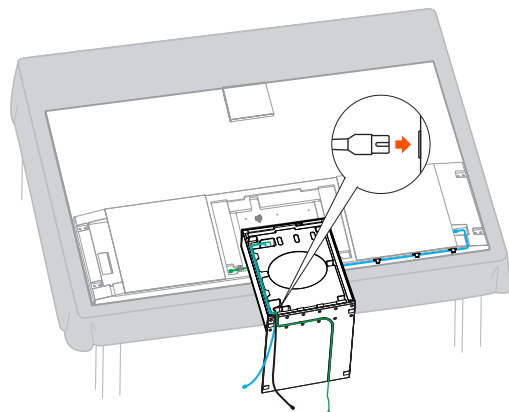
15 Put back the magnetic glass cover of the Subwoofer, and stick the footpads on the two ends of the bottom stand bracket.



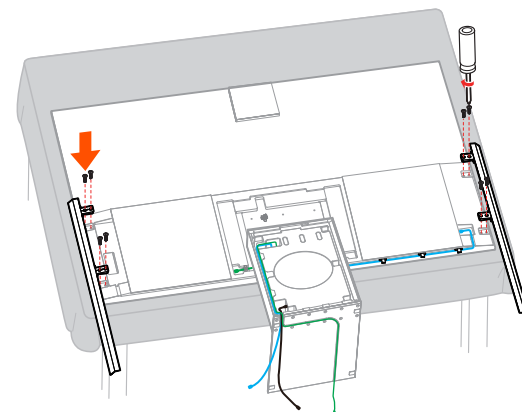
16 Installation of the floor stand is done.



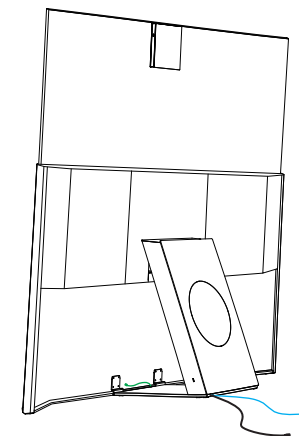
11 Plug in the Subwoofer power cable, and let the TV power cable and the Sound Bar connection cable go through the groove as illustrated.



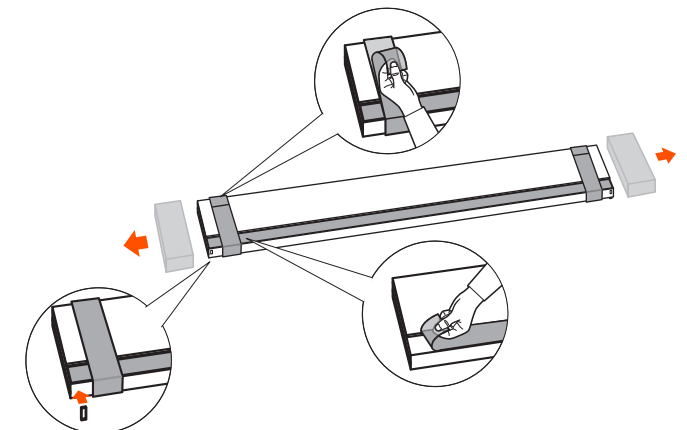
12 Align the left and right stand brackets on the back of the TV and secure them to the TV with 8 M5X15mm screws.



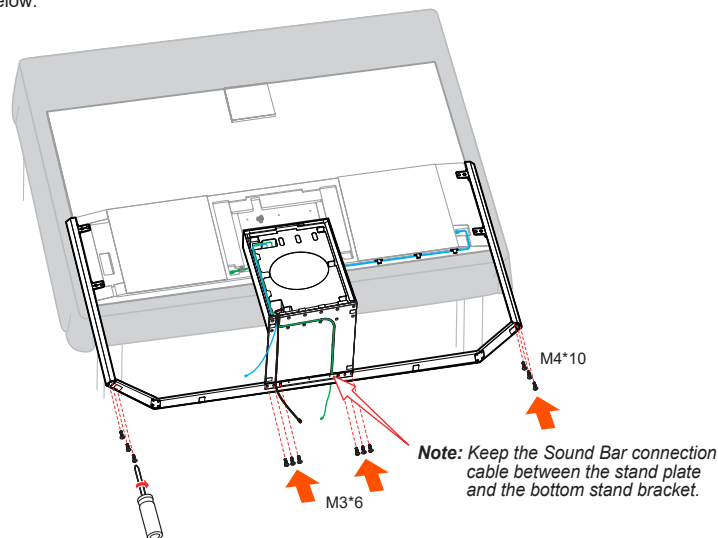
17 Lift the TV upright.



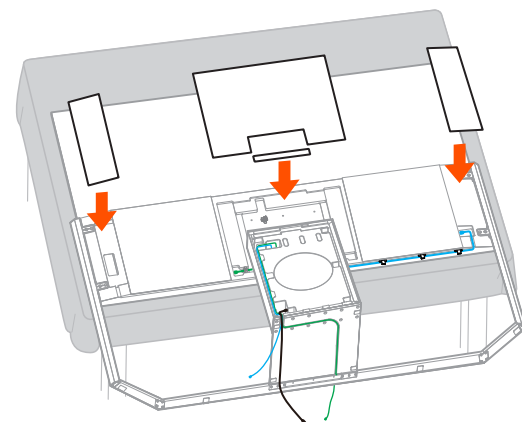
18 Peel the tape and film off the Sound Bar as illustrated, then stick the two footpads on the two ends of the bottom of the Sound Bar.



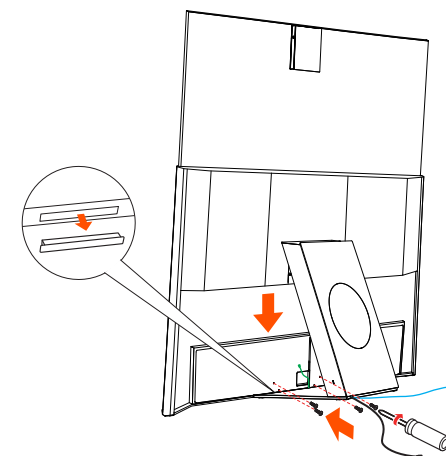
13 Secure the two ends of the bottom stand bracket to the left and right stand brackets with 6 M4X10 screws. Secure the middle part of the bottom stand bracket to the stand plate with 6 M3X6mm screws. Refer to the illustration below.



14 Put back the four magnetic glass covers as illustrated.



19 Remove the rubber plugs on the bottom of the Sound Bar, then match the Sound Bar with the linking plates and fix them with 4 M4X6mm screws.



20 Plug the Sound Bar connection cable to the port on the Sound Bar. All installation is now completed.

