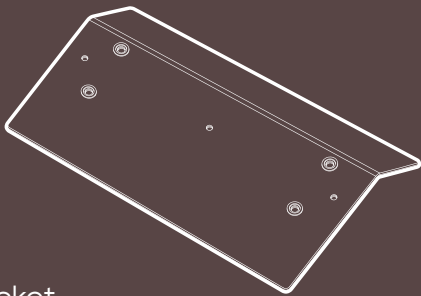


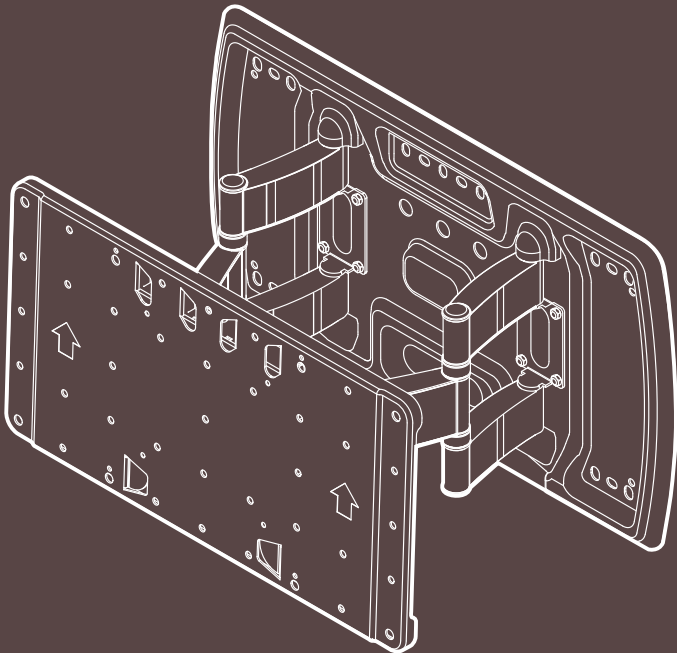
WALL MOUNT

WMBX925PRO



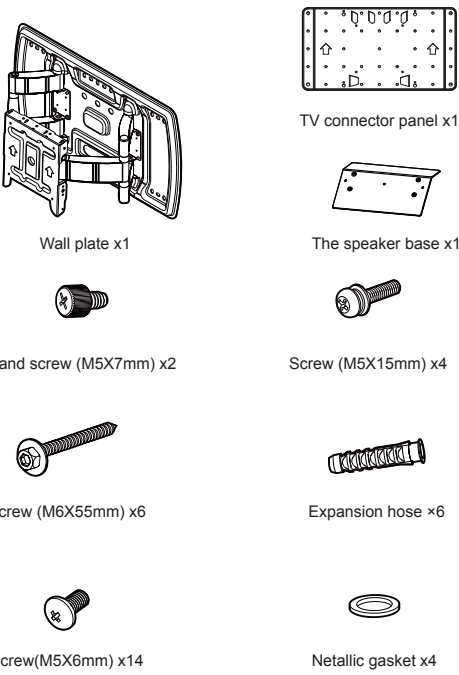
Wall mount bracket

Subwoofer base



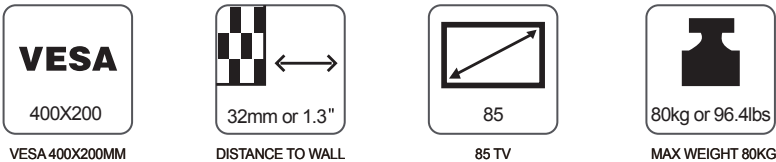
Installation Guide

What's in the Box:



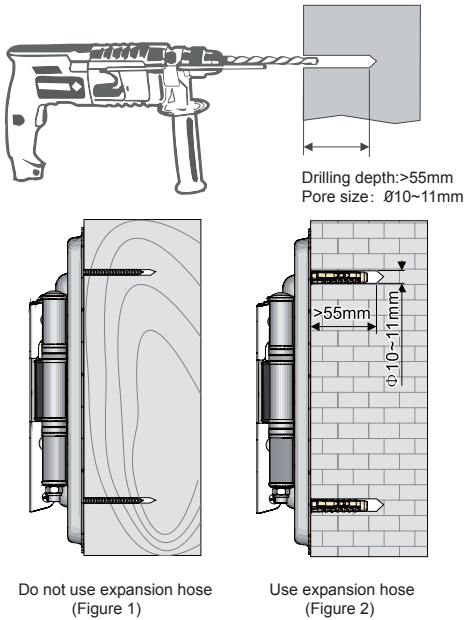
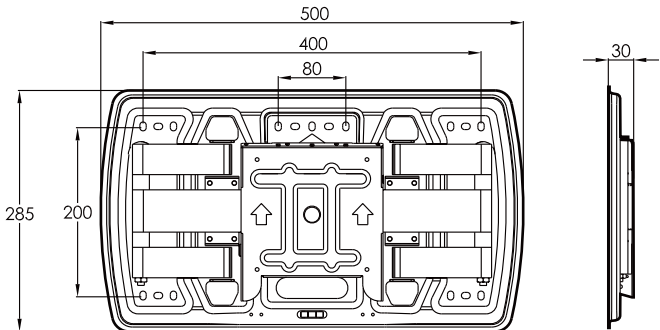
Important Safety Instructions:

1. When installing the TV set and this wall mounting bracket, at least three professionals are required to perform all the installation operations. Do not attempt to install by yourself, so as to avoid personal injuries and property damage caused by incorrect operation.
2. When installing, the installation position should be specified by professionals, so that its strength can support the gross weight of the TV set and bracket for long time. Also, measures should be taken to make sure that the installation position has enough strength to bear outside forces. The hanging points should be stressed on the wall directly. Do not install at positions without enough strength, such as plaster board, drywall, cement sheeting or similar surfaces. The wall mount **MUST** be mounted on appropriate supporting structures like timber, steel or masonry using appropriate fasteners.
 - In places with few people such as home or hotel rooms, the watching distance is 3 to 5 times the screen diagonal size. The installation height should be appropriate to your viewing angle.
 - To prevent accidental damage to the TV set and personal safety accidents, please avoid installing the bracket at positions that children may easily touch the screen.
3. The bracket should be installed on a vertical surface. Avoid installing on a gradient surface or on the top of the room, otherwise the TV set may fall off and cause personal injuries.
4. If any screws or parts that assembly are loose or lost, switch off and unplug the TV set, and contact professionals to repair.
5. When installing the bracket, avoid places that are within live electricity or strong magnetic fields, avoid positions that are susceptible to noise or vibration, and avoid places where flammable gas is easy to leak.
6. To watch TV programs normally and avoid eyestrain caused by direct strong light and backlighting, avoid installing the bracket in places where there is direct strong light.
7. To prevent fire, avoid installing the bracket in places with bad conditions, such as heavy smoke, strong wind, moisture or high-temperature heat sources.
8. When installing, make sure the metal parts and screws are connected tightly, so as to prevent the screws from becoming loose, which may cause the TV set to fall and risking personal injury.
9. Read and understand this installation guide seriously, and follow all the instructions strictly. TCL does not bear responsibility for any damage and loss caused by improper installation and operations.

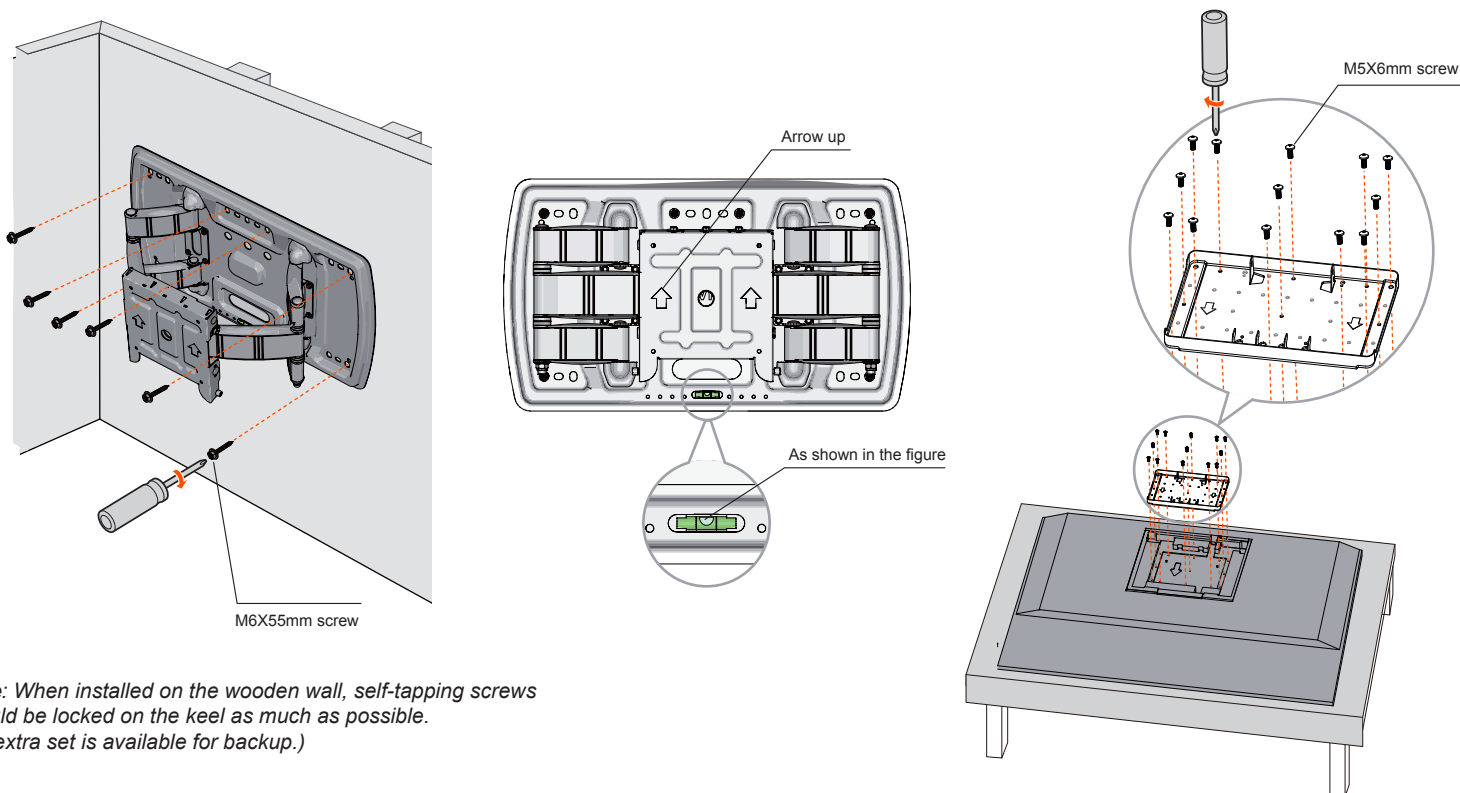


1 Wall drilling and installation dimension

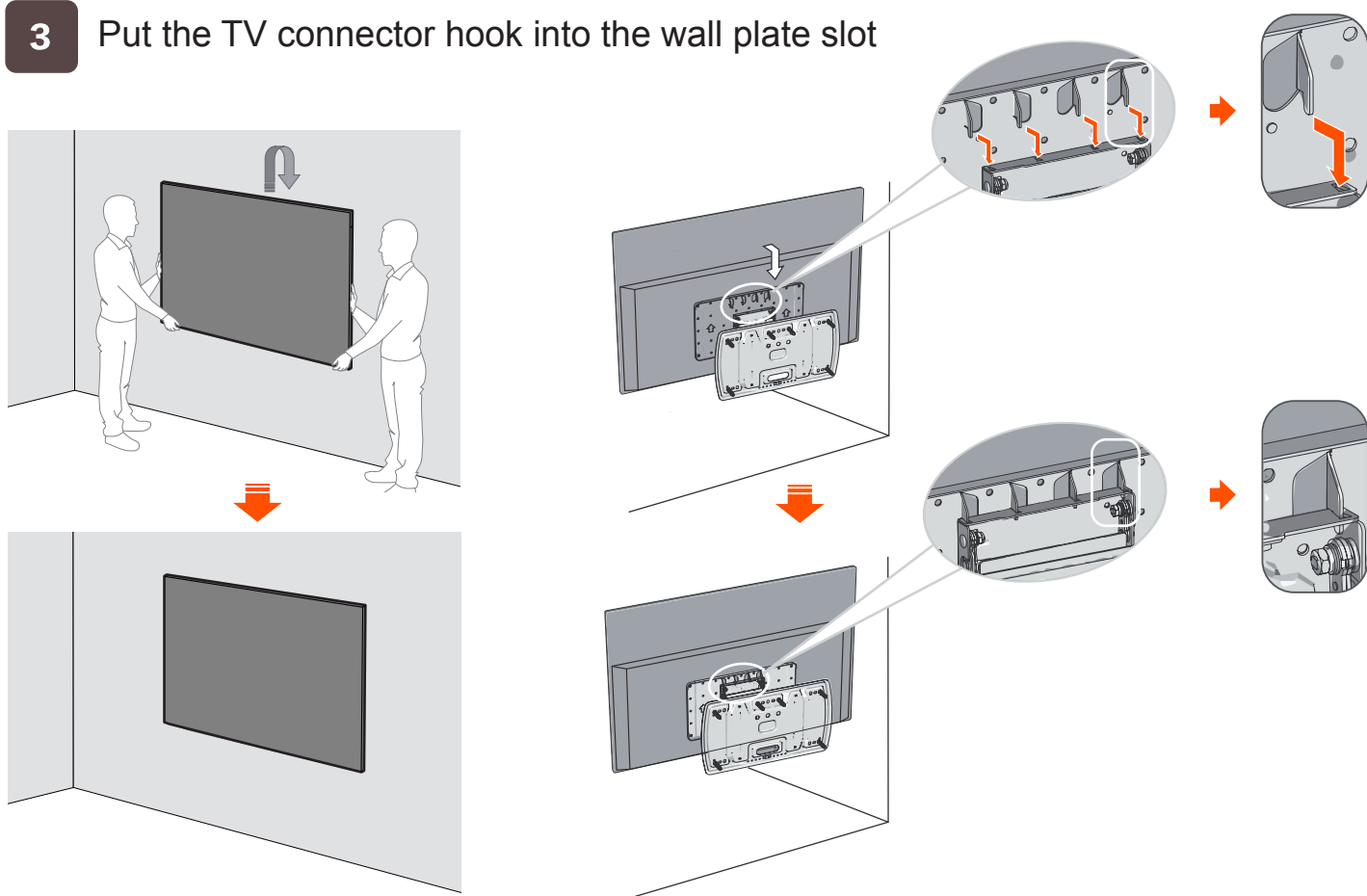
- Minimum mounting dimensions on solid wood wall: 610(L)x500(H)x70mm(W). (Figure 1)
Note: Make sure the solid wood wall can support the total weight of the TV and the Wall Mount Bracket.
- The minimum thickness of concrete wall should be 100mm, Drilling dimension 10~11mm(pore size) x55mm(drilling depth).
Note: Use self-tapping screws(M6X55mm) and expansion hoses. (Figure 2)



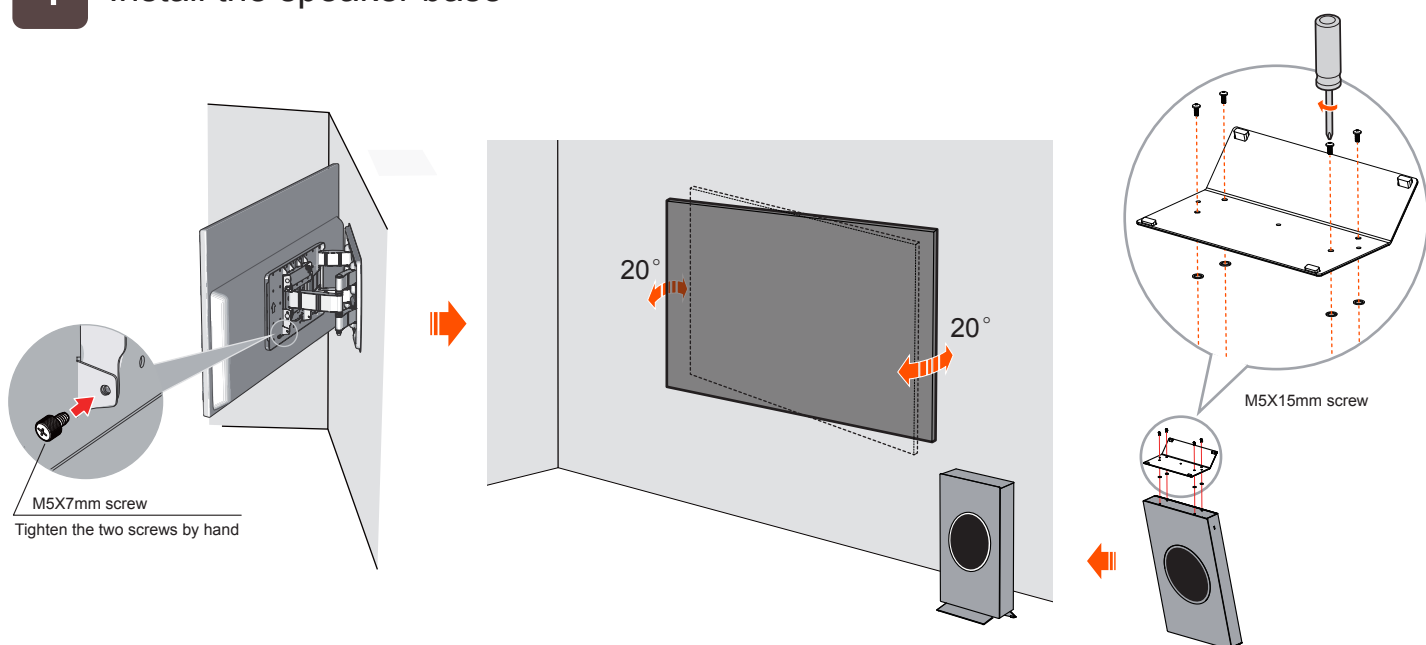
2 Mount the wall plate and TV connector panel



3 Put the TV connector hook into the wall plate slot



4 Install the speaker base



Read and understand this installation guide carefully and follow all the instructions. TCL does not bear responsibility for any damage and loss caused by improper installation and operation.