

Quick reference guide

TCL LINKZONE 

About your TCL LINKZONE 5G UW



1. Touch screen

Navigate the screen using your finger.

2. Power button

- To turn on, press and hold until screen welcome message appears.
- To turn off, press and hold until Shutdown screen appears. Then tap 'shutdown'.
- Press and release to wake up the display.

3. USB-C port

- Connect to a power supply using the included USB-C cable and wall adapter.
- Connect to "On the Go" (OTG) Cable (sold separately) to recharge other accessories such as a smartphone or bluetooth headset.

4. LAN port















Connect an Ethernet cable to a computer which provides secure connection to connected devices.

5. Reset button

If your device does not respond or needs to be reset, insert a sharp object, such as a paper clip into this hole for 3 seconds.

NOTE: All passwords will be reset to default settings.

Status icons

	Home
	Network signal strength
	LAN connection
	USB connection
	LINKZONE Wi-Fi network
	Connected devices
	Wi-Fi name/password
	No network service
	SIM card not available
	SIM card locked
	Unread messages
	The battery is fully charged.
	The battery is running low.
	The battery is charging.

LED Guide

LED Status	Description
Green	Connected to home network
Amber	Roaming Network
Red	Not connected to network
White	Device is on

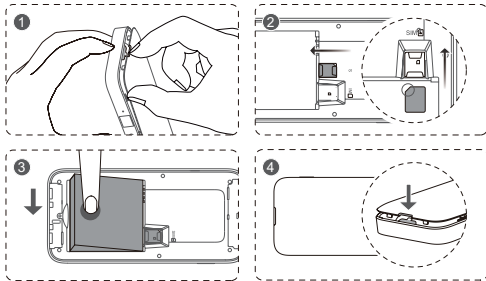
For a full list of definitions (LED may be blinking and other times solid color), see the User Manual at Verizon.com

Setting up TCL LINKZONE 5G UW

Your device has a Verizon 5G SIM card already installed.

If the SIM card must be replaced:

1. Open the back cover, remove the battery, and slide the SIM card out of the SIM Card Slot.
2. To reinstall it, align the cutout tab using the diagram and gently slide the card into the slot with gold metal side down.
3. Reinstall the battery.
4. Close the back cover.

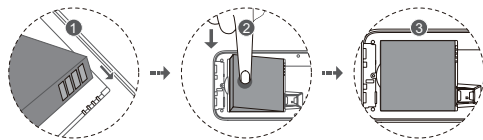


NOTE: Only a Verizon Nano SIM card can be used.

Step 1: Insert the Battery

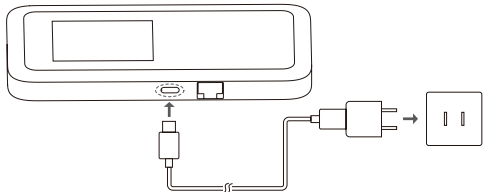
To Install the battery:

1. Align the metal contacts with the pins inside the battery compartment.
2. Press the battery down until it properly sits in place.
3. Press the back cover into place by aligning the tabs. It only fits one way.



Step 2: Charge the TCL LINKZONE 5G UW

1. Connect one end of a USB-C cable to the device and the other end to a wall charger.
2. Insert the wall charger into AC power source and charge LINKZONE for 2 hours.



Using TCL LINKZONE 5G UW

Turn your LINKZONE on/off

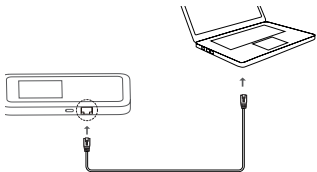
1. Press and hold the power button to turn on your LINKZONE. When the display screen lights up, remove your finger from the button.
2. Following the wakeup animation, select **English** or **Spanish** language, and then tap on the Home screen icons to familiarize yourself with the menu and features of your LINKZONE.
3. A quick press of the power button will turn on the display screen and wake up the device.
4. To turn LINKZONE off, press and hold the power button. Then tap "**Shutdown**" on the touchscreen to power down the device, or tap "**Restart**" to power cycle your device.

Connect to LINKZONE network

You have two options to connect your LINKZONE to the network.

1. Wired connection using either option below:

- Connect the LINKZONE to your computer using the provided USB-C cable.
- Connect one end of an Ethernet cable into the LAN port on the side of LINKZONE and the other end to your computer.

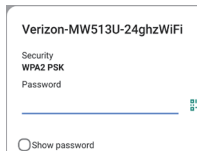


2. Wireless Connection:

- a. Tap "**Wi-Fi Name/Password**" on the LINKZONE Home Screen.



- b. Open **Settings** on your wireless device and turn on Wi-Fi.
- c. Select the network name (SSID) and enter the password. Your device will connect to the wireless network.
- Alternate QR code method: From the network settings on your smartphone, tap on the scanner icon next to password, and scan the QR code on the LINKZONE screen. The device will automatically connect to the wireless network.



NOTE: The Wi-Fi name and default passwords are also printed on the label underneath the battery.

Access advanced settings

You can access advanced settings and manage your LINKZONE network from the touchscreen. The Home screen displays the information for your network.

Tap **Menu** to view the Wi-Fi status, manage connected devices, change settings, and update software.

To configure more settings, open a web browser on the connected device, and log in to the Admin website, <http://my.mobilehotspot> (See the Admin website and login password on the label underneath the battery inside your LINKZONE.)

Using TCL Connect App

You can also use TCL Connect App to control your TCL LINKZONE 5G UW.

1. Download the TCL Connect App using one of the following two methods:

- Scan the QR code printed on the box to download TCL Connect app.
- Download it from Google Play (running on Android 5.0 or higher) or App Store (running on iOS 11.0 or higher).



2. After you have downloaded the TCL Connect App to your smartphone:

- a. Open TCL Connect App.
- b. Tap on the **TCL-MW513U** symbol.
- c. Follow the on-screen instructions to complete the login process.

3. Use the TCL Connect app to change settings, monitor usage and control your LINKZONE.

NOTE: Admin password is provided on the label underneath the battery. Write down the password and keep in a safe place away from the LINKZONE.

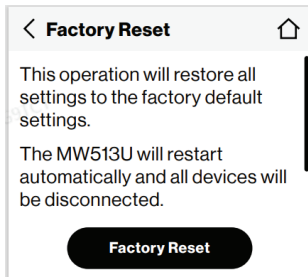
Resetting TCL LINKZONE 5G UW

NOTE: Resetting your LINKZONE will disconnect devices and reset network names and passwords.

Reset your LINKZONE to factory settings using one of the following two methods:

1. Use a sharp object such as a paper clip end to press into the hole marked “RESET” on the side of LINKZONE for 3 seconds.

2. Tap on the LINKZONE screen, and navigate to **Menu > Settings > Factory Reset**.



Learning more



Visit [verizonwireless.com/support](https://www.verizonwireless.com/support)



Download a User Guide from [verizonwireless.com/support](https://www.verizonwireless.com/support) or call **800.922.0204** to order a copy.

Spanish User Guide can also be found from www.verizonwireless.com/support

Managing your account



My Verizon Mobile app

Manage your account, track your usage, edit account information, pay your bill and more.

International travel



For features and rates when traveling outside the US, visit

[verizonwireless.com/international](https://www.verizonwireless.com/international)

Customer service



Call 1.800.922.0204

Twitter [@VZWSupport](https://twitter.com/VZWSupport)

Additional information

Your wireless device and third-party services

Verizon is the mobile carrier associated with this wireless device, but many services and features offered are provided by or in conjunction with third parties. Verizon is not responsible for your use of this device or any non-Verizon applications, services and products, including any personal information you choose to use, submit or share with others. Specific third-party terms and conditions, terms of use and privacy policies apply. Please review carefully all applicable terms, conditions and policies prior to using this wireless device and any associated application, product or service.

© 2022 Verizon Wireless. All Rights reserved

English-CJB7260LCAAA

Printed in China

