

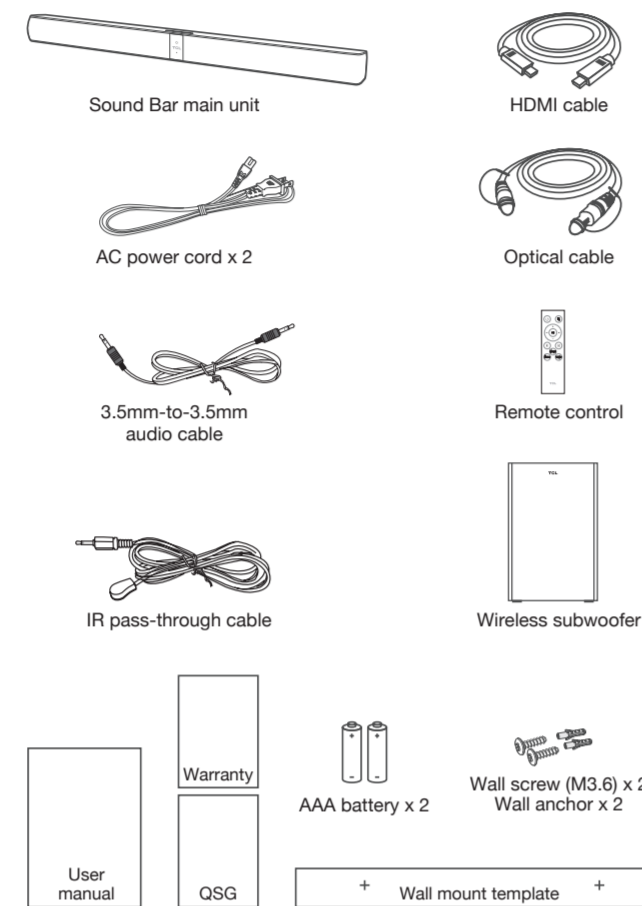
TCL

2.1 Channel Home Theater Sound Bar
TS7010

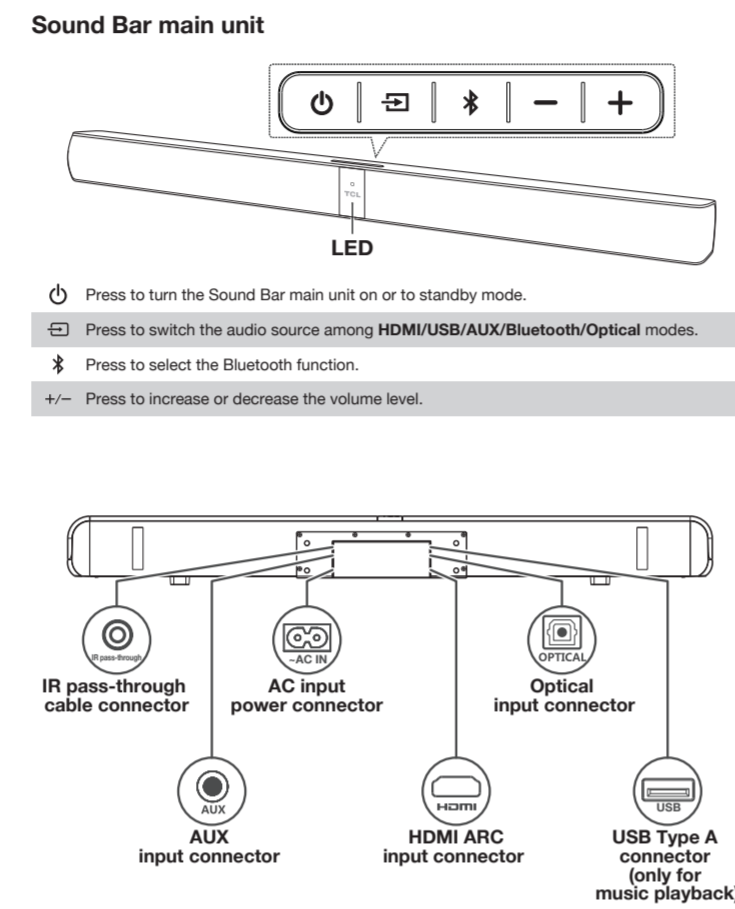


Quick start guide

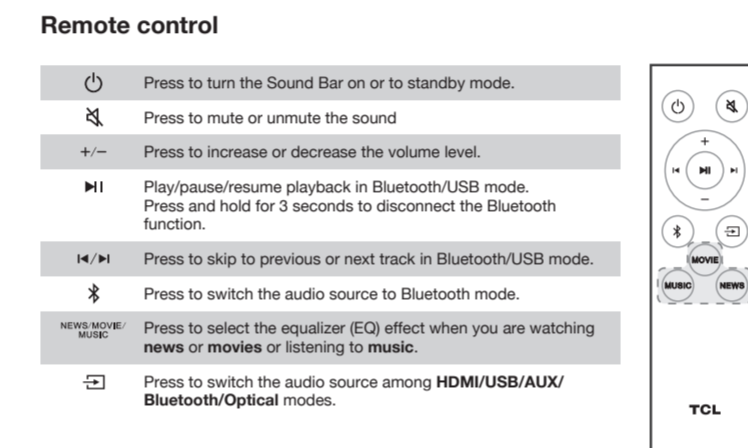
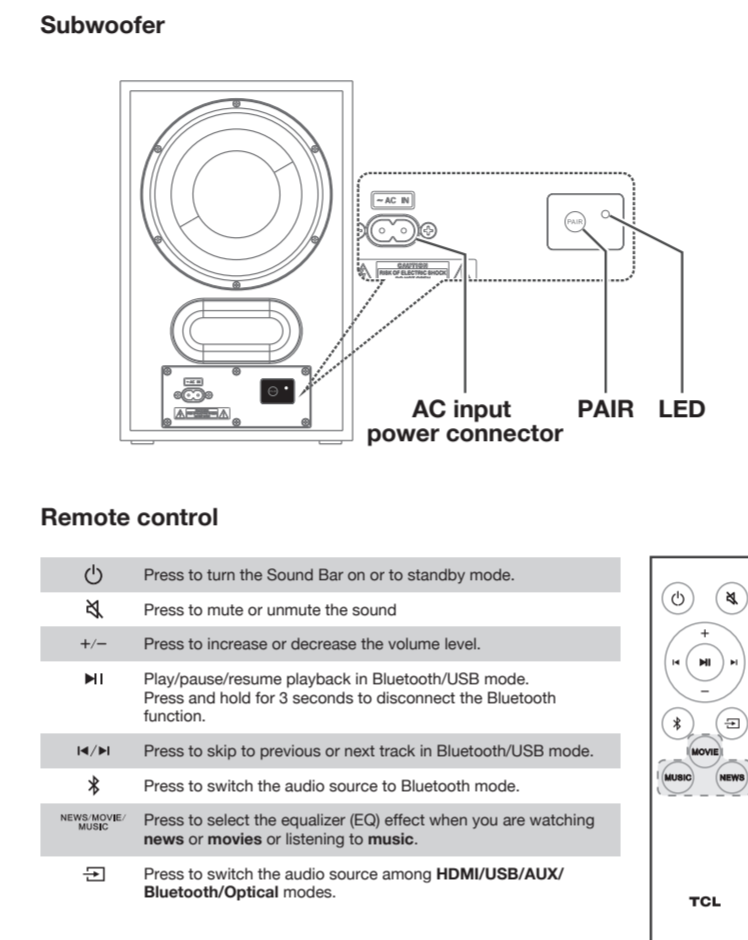
1. What's in the box



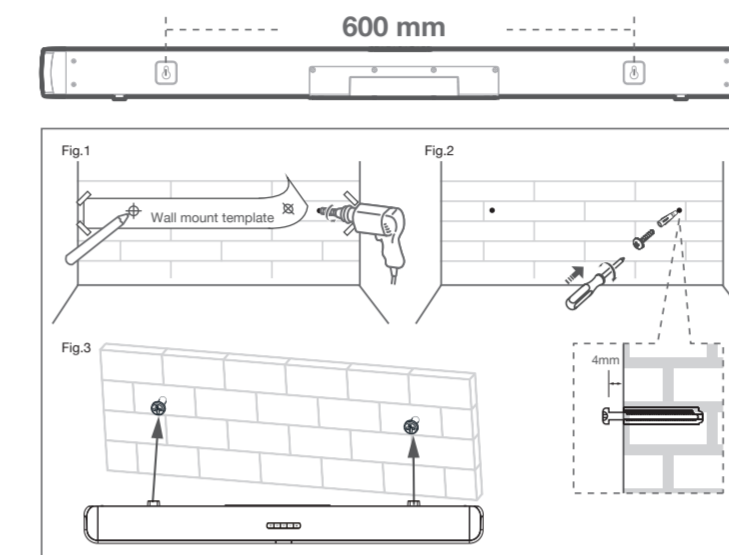
2a. Overview



2b. Overview



3. Wall mount

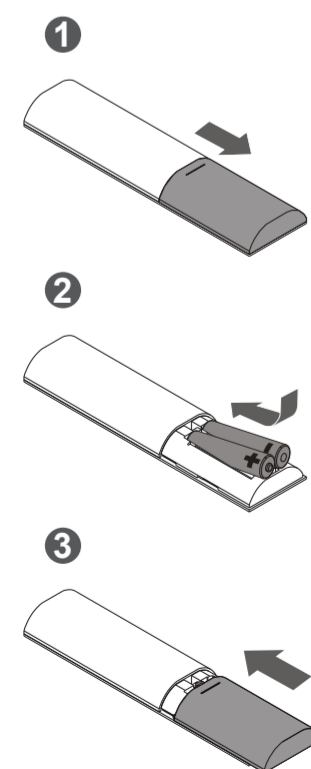


- Place the supplied wall mount template on the wall. Make sure the wall mount template is at least 5cm below the center of the TV.
- Use a level to make sure the Sound Bar is positioned accurately.
- Use the tape to stick the wall mount template firmly on the wall.
- Mark on the wall using each marking on the template through the mounting holes (Fig.1).
- Take away the wall mount template.
- Drill a screw hole at each marking on the wall.
- Insert the supplied wall anchors into 2 screw holes on the wall (Fig. 1).
- Insert the supplied screws into the wall anchors. Leave 4mm between the screw heads and the wall (Fig. 2).
- Fix and tighten the screws on the wall (Fig. 3).
- Hang the Sound Bar main unit on the screws (Fig. 3).

Copyright © 2019 TCL.
All rights reserved.
TS7010_AU_EN_QSG_V2.0



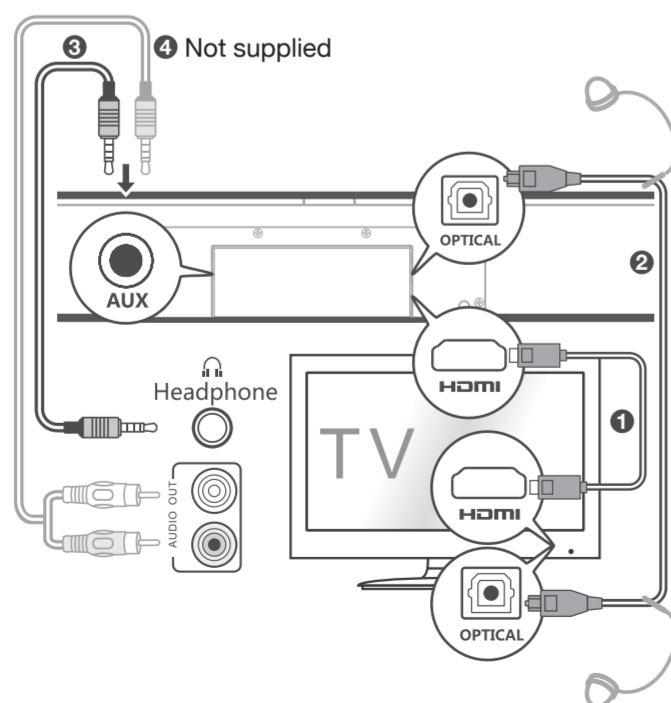
4. Install/replace the remote control batteries



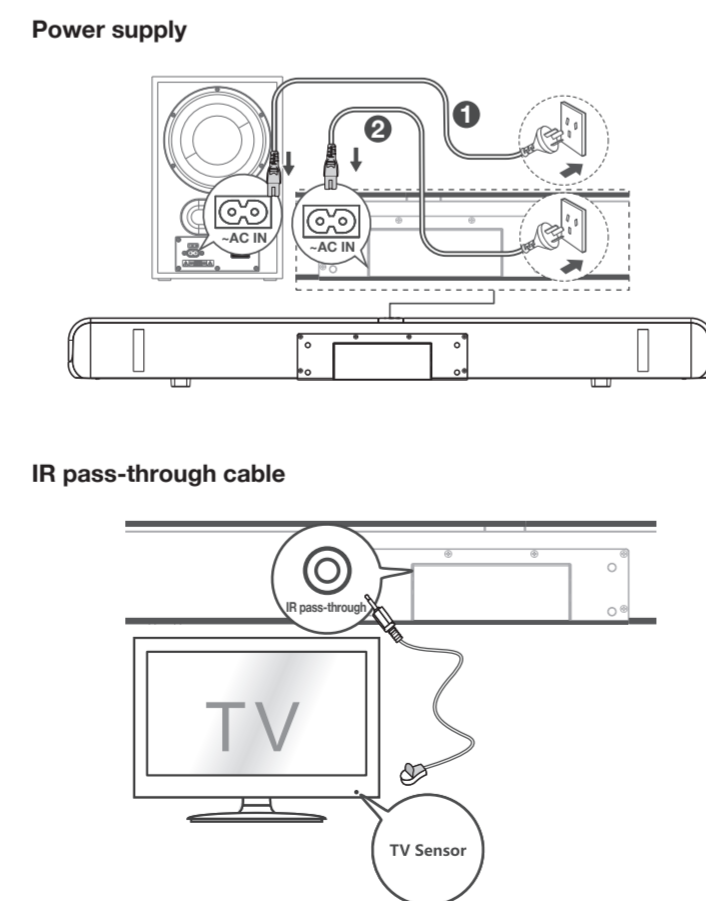
Battery type:
1.5V AAA battery x 2

5a. Connect

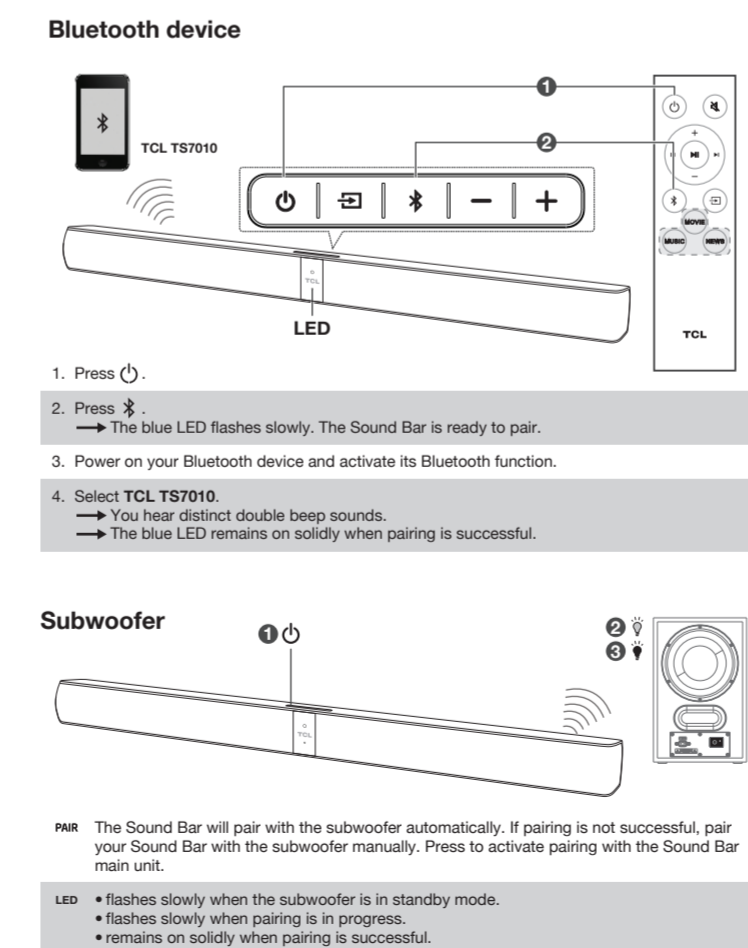
- HDMI cable
- Optical cable
- 3.5mm-to-3.5mm audio cable
- RCA-to-3.5mm (not supplied)



5b. Connect



6. Pairing



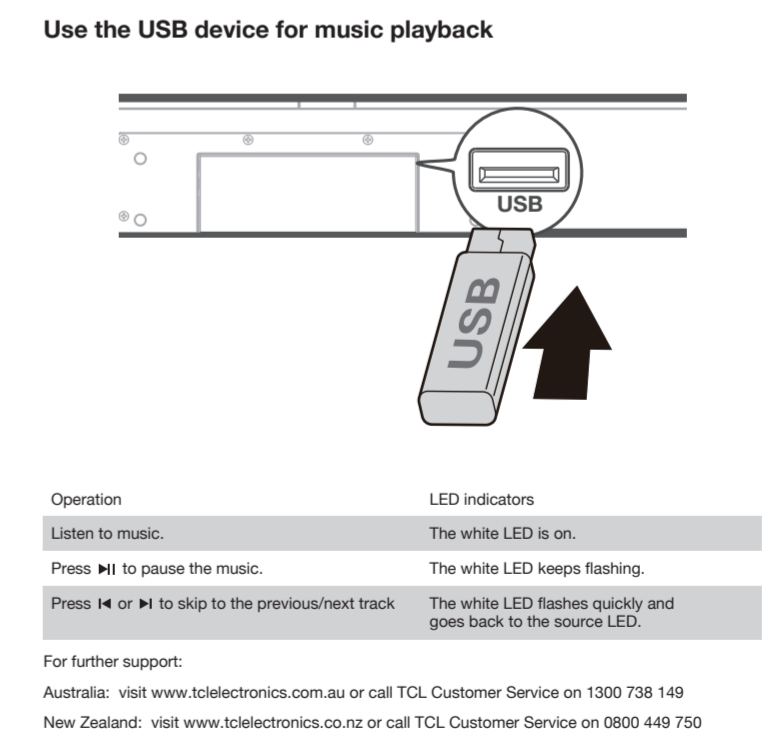
7a. Use

| Sound Bar status | LED indicators |
|---------------------|-------------------------------|
| in standby mode | The red LED is on solidly. |
| in HDMI ARC mode | The purple LED is on solidly. |
| in AUX mode | The green LED is on solidly. |
| in Bluetooth mode | The blue LED is on solidly. |
| ready to pair | The blue LED flashes slowly. |
| pairing in progress | The blue LED flashes slowly. |
| in optical mode | The yellow LED is on solidly. |
| in USB mode | The white LED is on solidly. |

7b. Use

| Operation | LED indicators |
|-----------|--|
| + | The white LED flashes quickly and goes back to the source LED. |
| Mute | The red LED keeps flashing. |
| ← | The red LED flashes and goes back to the source LED. |
| ▶ | The white LED flashes once. |
| MOVIE | The white LED flashes once. |
| MUSIC | The green LED flashes once. |
| NEWS | The yellow LED flashes once. |

7c. Use



For further support:
Australia: visit www.tclelectronics.com.au or call TCL Customer Service on 1300 738 149
New Zealand: visit www.tclelectronics.com.nz or call TCL Customer Service on 0800 449 750