

# TCL ZOOM

User Guide  
[www.tclusa.com](http://www.tclusa.com)



## TABLE OF CONTENTS:

Introduction

Battery setup

Programming your TCL Zoom remote

- Installing the TCL Zoom app

- Installing your Zoom receiver

TCL Zoom remote button functions

Using your TCL Zoom remote

- Use TCL Zoom remote on Zoom app

- Use TCL Zoom remote outside Zoom app

Troubleshooting

Warranty

FCC Statement

Join our Zoom Facebook page  
to learn more about your device  
and get the latest news.



need Facebook link

## Introduction

Congratulations on your purchase of the TCL Zoom, the interactive remote control created specifically for kids.

### Features:

- Compatible with TCL Roku TV models 43S525 and 50S525.
- Interactive remote for navigating the Zoom streaming app.
- When paired with the Zoom app, kids will be able to navigate through thousands of movies and TV episodes.
- It functions as a regular TV remote control, i.e., turning the TV on/off, volume control, and option select; and can also be used with other TV applications.
- Voice search can be used to find movies and TV episodes on the Zoom app.

### Inclusions:



TCL Zoom remote



Zoom receiver



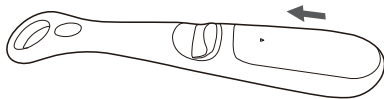
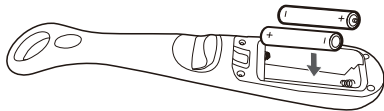
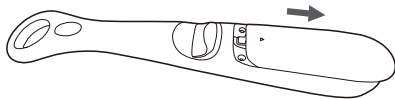
Two (2) AAA batteries

## Battery setup

Your TCL Zoom remote requires two (2) AAA batteries (included).

### Battery Installation:

1. On the back of the remote, the battery compartment is located at the bottom of the remote. Place your finger on the corrugated surface of the battery cover and slide it downwards to remove it.
2. Insert the two (2) AAA batteries inside by matching the (+) and (-) symbols of the batteries to the (+) and (-) symbols inside the battery compartment.
3. To cover the battery compartment, place the battery cover below the opening and slide it upwards to lock-in place.





NOTE: If your TCL Zoom remote stops working properly, replace batteries immediately.

**Battery Precautions:**

- Do not mix old and new batteries.
- Do not mix rechargeable and disposable batteries.
- Always remove old or worn-out batteries and replace them with new ones.
- Recycle or dispose batteries in accordance with local and national regulations.

## Programming your TCL Zoom remote

### Installing the TCL Zoom app

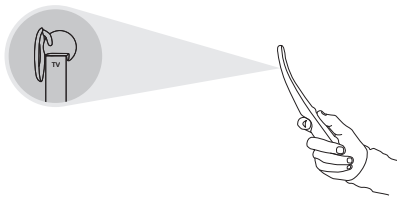
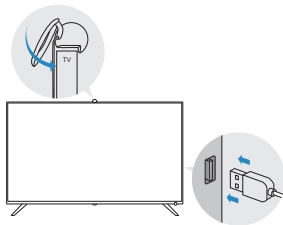
1. Check if the Zoom app is already installed on your TCL Roku TV.
2. If the Zoom app is not yet installed, go to Streaming Channels menu.
3. Enter Zoom on the search box and then select Zoom.
4. Select Add Channel to install the Zoom app.



## Installing your Zoom receiver

1. Turn on your TV using the TV remote control.
2. Plug your Zoom receiver's dongle into the TV's USB port which is usually located on the side of the TV. Once connected properly, a blue light will flash once from your Zoom receiver.
3. Place your Zoom receiver on the top of the TV, then clip the ring at the back of the TV. Make sure that the angle of the Zoom receiver is within the range of your Zoom remote.

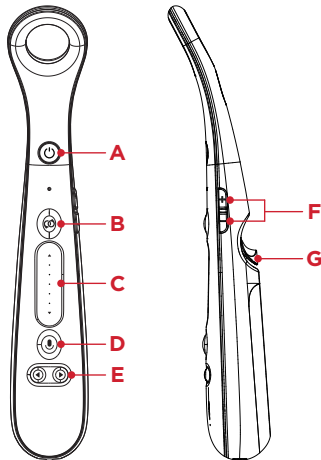
NOTE: Make sure that the front of the Zoom receiver is facing forward.



## TCL Zoom remote button functions

Your TCL Zoom remote also functions as a TV remote control.

- A Power** - turns the remote on/off
- B Hotkey** - shortcut to Zoom app
- C Trackpad** - zooming in/out
- D Voice** - voice search
- E Left/Right** - menu navigation
- F Volume Up/Down**
- G Trigger** - select items/play movie/OK button



## Using your TCL Zoom remote

NOTE: For more instructions, access the Help page in Zoom app.

### Use TCL Zoom remote on Zoom app

1. Point your TCL Zoom remote at the TV and within range of the Zoom receiver. A blue circle will appear on your TV screen as a pointer.
2. Select a topic island then slide your thumb up on the trackpad to zoom in and see the movies on that island.
3. You can further zoom in the screen by sliding your thumb again.
4. If you want to go back, just zoom out by sliding your thumb downwards on the trackpad.
5. To move the screen around, hold the trigger and slowly move your arm around.
6. To select a movie, point the blue circle then press the trigger.

### Use TCL Zoom remote outside Zoom app

1. Use the trackpad to go up/down the menu; ◀/▶ keys to go left/right.
2. Use the trigger to select.

## Troubleshooting

### Remote does not operate on your TV

- Make sure that the Zoom receiver is plugged properly on your TV, wait for the blue light to flash once from your Zoom receiver, indicating it's been plugged in properly.
- Check if your batteries are new and installed correctly.
- Make sure that your TCL Zoom remote is within range of the Zoom receiver and there is no obstruction between the Zoom receiver and the remote.
- Make sure you have installed the Zoom app on your TV.
- Check the angle of your Zoom receiver and adjust it properly.
- TCL Zoom remote may not be compatible with your TV.

### Version of TV supported

TCL Roku TV 43S525 and 50S525

### Pairing of the Zoom remote and the receiver

The Zoom remote and the receiver are pre-paired. Users don't have to pair it by themselves in general. But if the light blinks red, it indicates the Zoom remote and the receiver needs to be paired again.

1. Keep the receiver plugged to the TV.
2. Move the Zoom remote close to the receiver.
3. Long press the Zoom hotkey and the volume down button for a few seconds.
4. The red light will flash blue two times to indicate that both devices are paired.

## Warranty

TCL North America warrants this product to be free from manufacturing defects for a period of 90 days from the original date of consumer purchase. This warranty is limited to the repair or replacement of this product only and does not extend to consequential or incidental damage to other products that may be used with this unit. This warranty is in lieu of all other warranties express or implied. Some states do not allow limitations on how long an implied warranty lasts or permit the exclusion or limitation of incidental or consequential damages, so the above limitations may not apply to you. This warranty gives you specific rights, and you may also have other rights which vary from state to state. If the unit should prove defective within the warranty period, return prepaid with dated proof of purchase to:

TTE Technology, Inc. (dba TCL North America)  
1860 Compton Ave, Corona, CA 92881, USA



## FCC Statement

This device complies with part 15 of the FCC rules. Operation is subject to the following two conditions: (1) this device may not cause harmful interference, and (2) this device must accept any interference received, including interference that may cause undesired operation.

FCC NOTE: The manufacturer is not responsible for any radio or TV interference caused by unauthorized modifications to this equipment. Such modifications could void the user's authority to operate the equipment.

NOTE: This equipment has been tested and found to comply with the limits for a Class B digital device, pursuant to Part 15 of the FCC Rules. These limits are designed to provide reasonable protection against harmful interference in a residential installation. This equipment generates, uses and can radiate radio frequency energy and, if not installed and used in accordance with the instructions may cause harmful interference to radio communications. However, there is no guarantee that interference will not occur in a particular installation. If this equipment does cause harmful interference to radio or television reception, which can be determined by turning

the equipment off and on, the user is encouraged to try to correct the interference by one or more of the following measures:

- Reorient or relocate the receiving antenna.
- Increase the separation between the equipment and receiver.
- Connect the equipment into an outlet on a circuit different from that to which the receiver is connected.
- Consult the dealer or an experienced radio/TV technician for help.



**Kids can now “Zoom” through a vast selection of their favorite movies and TV shows in a fun, interactive way with the Magic Map!**

TTE Technology, Inc. (dba TCL North America)  
1860 Compton Ave, Corona, CA 92881, USA